



SHIPO

Biennial Report (2016-2017)

Contents

Dear Readers.....	2
About SHIPO.....	3
Highlights of SHIPO’s approaches	5
Programme Overview.....	8
MAMMIE Unit	8
Cluster Unit	12
SMART Centre Unit	15
Program Development, Monitoring and Evaluation Unit	19
Our Impacts	22
Child Development and Protection.....	22
Water and Sanitation.....	23
Get Involved.....	25
Financial Performance	26
Income Expenditure	26
The Year Ahead.....	27
Child Development and Protection.....	27
Water, Hygiene and Sanitation.....	27
Our Donors, Stakeholders and Supporters.....	29
What your Money can Support/ Buy	30



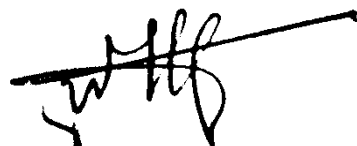
As you go through this Report, you will get a good overview of SHIPO's activities, results and approach. Not only for 2016 & 2017, but since 2001 where SHIPO was first registered.

SHIPO is a major player in water and sanitation. Citizens of Njombe Region are among those in Tanzania with better access to safe water partly due to SHIPO and our collaboration with authorities and stakeholders in the water and health sectors. We want to continue the strong relationships and take a step further to push low-cost WASH technologies to national approval. At the same time we want to develop our expertise in the sectors of Natural Resource Management and Sustainable Farming.

In the Education sector SHIPO has mainly assisted in infrastructure. All done the SHIPO way with maximum contribution from communities and always based on the needs, priorities and capacities of the people involved. It is our intention that education programs supported through SHIPO interventions can be developed to also include capacity building of the relevant government institutions.

Enjoy reading this report and I hope to receive your comments, in our common efforts to obtain sustained improvements in the living standards of poor people in Tanzania

Oygen Joseph Mwalongo,
SHIPO General Manager





About SHIPO

Background of SHIPO

SHIPO is a Tanzanian Non- Governmental Organisation (NGO) based in Njombe Region 5 km South of Njombe Town Centre along the Makambako-Songea Tarmac and Main Road.

SHIPO has been registered on 7th May 2001 with the Ministry of Home Affairs under the Society Ordinance Act of 1954 and provided with a Certificate of Compliance No. 1629 on 27th Sept 2005 in the Vice-President's Office Under the Non-Governmental Organization Act 2 Sect. 11 (3) of Act 24 of 2002.

SHIPO was found by the three founder members, Mr. Walter Mgina, Mrs. Ester

Mgina-van Vugt and Mr. Protas S. Mwanyika whom are still active as board member. SHIPO board has 8 members. Since December 2007 SHIPO has its own offices with training centre on the Songea Road. The premises host SHIPO staff as well as staff of other NGO's and organisations and is used for trainings and meetings.

SHIPO started through the partnership with the Dutch Organisation, Connect International (CI). Through the years SHIPO has developed partnerships with many organisations in- and outside Tanzania which has helped SHIPO to develop itself into a strong local NGO.



As an NGO

Water and Sanitation

SHIPO supports communities and families to have sustainable supply and access to safe and clean water and to improve Hygiene and Sanitation through the use of low-cost-WASH technologies

Education & Health

SHIPO works to develop and improve the education and health sectors by supporting communities to construct or improve all important infrastructures. Our interventions also aimed at changing the thinking and mentality of all stakeholders in the sectors



Vision

SHIPO wants:

To obtain sustained improvement in the living standards of people in Tanzania.

Mission

SHIPO exists:

To facilitate and provide sustainably products and services to its customers and beneficiaries, which contribute effectively to improved capacity and behaviour, based on their demand, needs and capacities and through Multi Stakeholder Participation.

SHIPO 'values' are:

- *Ownership* (Commitment, Co-operation & Flexibility)
- *Pride* (Honesty, Integrity & Purpose)
- *Good Governance* (Accountability, Transparency and good Decision-making)



SHIPO is working:

...combining hardware and software...

SHIPO uses an integrated approach for community development ; combining hardware (eg. construction of school and WASH facilities) and software (creating awareness, technical and business skills training, facilitation, access to credit, etc.). SHIPO will contribute effectively to improved livelihood of people and communities and will establish structures that sustainably provide products and services that enhance community development, ownership and income generation.

...that fully utilizes its Training Centre...

SHIPO Training Centre provides training and consultancy services on SMARTechs, IWRM and other subjects to people from communities, organizations, and private companies inside and outside Tanzania. The Training Centre also aims to brand its products and provide quality control on products and services which are especially provided through the trained private sector

...that works in networks and Multi Stakeholder Partnerships...

SHIPO wants to be/ remain engaged in networks and Multi Stakeholder Partnerships inside and outside Tanzania, to have a direct impact on poverty reduction as well as through its

SMARTechTraining Centre to provide people with knowledge, skills and an enabling environment for entrepreneurship. Cooperation with other stakeholders makes it possible to create leverage and to be able to attract funds to tackle major problems.

...properly compiles and documents results...

By using an online database system for project monitoring, evaluation and reporting (PMER) SHIPO wants to provide quality information about its projects, products and services. By analyzing data in an efficient way SHIPO can easily analyze development questions, anticipate problems and learn from them. Producing and sharing quality information will motivate and help communities, organizations and another stakeholder to work closely and efficiently together with SHIPO.

...considers cross-cutting issues...

Inclusion, gender, good governance, environmental conservation...

...and let people participate at all levels.

SHIPO will motivate their staff by including them in planning stages and making them responsible for their own tasks, exactly like we include communities in our programs.

Approach

Highlights of SHIPO's approaches

Generic approaches

The generic approaches applied by SHIPO in all its projects are:

The participatory approach

SHIPO merely helps communities, organized groups and small and medium entrepreneurs to help themselves in their efforts to raise their own living standards and alleviate poverty. We call it self-help or self-awareness. Based on the need and requests we link stakeholders with each other to secure efficient assistance.

Skills development

Project always contain skills development as a component of capacity building whether it is to

empower individuals, entrepreneurs, groups in the communities or with other stakeholders

Multi Stakeholder Participation (MSP)

It is through Multi Stakeholder Participation that SHIPO SMARTechs and other interventions can be sustainably implemented. MSP is used in order to be able to work more efficiently and effectively, to participate in and contribute to the development of value and supply chains, to be able to tackle substantial problems and to create leverage and create opportunities for private sector development.

Specific approaches

>>SHIPO applies the following Specific approaches in the Intervention area of WASH:

Specific approaches	Explanation
SMARTechs , (Simple, Market based, Affordable, Repairable Technologies) skills development	includes MUS (Multiple Use Services) and water for irrigation, IWRM technologies, HWTS (Household Water Treatment and Storage) solutions,
IWRM (Integrated Water Resource Management)	includes protection of water sources, recharge/ 3R, MUS, reduced use, environmental conservation and rehabilitation, formation of entities for Operation & management of water structures (eg. COWSO)
CLTS (Community Lead Total Sanitation) and MTUMBA	Includes CLTS triggering, Open Defecation Free (ODF) communities, hygiene behaviour and practices on food hygiene and safety
SMARTech water and sanitation marketing	includes household and community (public) self-supply, provision of basic services, demand driven, affordable design,
WASH Entrepreneurship	including training of entrepreneurs and supply chain development
Water supply schemes	includes SHIPO implementing (larger and subsidized) WASH projects, Multi stakeholder, formation of

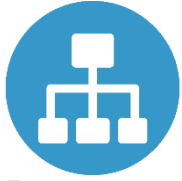
	entities for Operation & management of water structures
Productive sanitation and conservation agriculture	To improve food security & income generation
SMARTechs branding and quality control	through SMART Centre network and advocacy

>>SHIPO applies the following Specific approaches in the Intervention area Child Development and Child Protection:

Specific approaches	Explanation
TLM (Teaching and Learning Materials)	including capacity building of producers, marketing and dissemination of TLM, and training in the schools about Montessori approach and active learning methodology.
Productive schools	including vegetable gardening, entrepreneurship, selling avocados to finance the schools.
Improving school infrastructure and equipment	By building classrooms, latrines, changing rooms for girls, waterpoints, teachers' offices, kitchens and dining halls and by improving the access of the schools to teaching materials, playgrounds and sports materials, furniture, books etc.
Supporting teachers for better teaching practices and school governance	With personalized coaching through academic officers visiting the schools and the teachers and with training good governance, leadership and curriculum implementation of selected subjects
Supporting school committees for further involvement of the parents in school governance	With personalized coaching and training on the roles of the school committees and with sensitization on the importance of parents participating and supporting the schools
Supporting local education authorities for better supervision and accountability	Providing to local education authorities with training and tools to successfully accomplish their duties (including support for transport and stationaries)
Improving school meals and pupils' health	Nutrition training, cooking training and school gardens for better nutrition meals at the school and with Menstrual Hygiene Management training for girls attending to school, their teachers and their parents
Sensitization campaigns for children rights for education,	Sensitizing parents, pupils and authorities about children rights, because creating a conducive

health and against violence and abuse.	learning environment is the duty of the entire school community
Measuring Quality education	Measuring performance through NECTA results and Uwezo test (sometimes school inspections)
Child to Child approach	includes school clubs, health and environmental clubs in the community, entrepreneurial skills
Disability inclusion	including support to children with a disability
Building up Child protection networks	Including violence and abuse, safety networks that know how to respond to diminish the risk and process cases.





Programme Overview

Departments

Currently, SHIPO has 5 units namely; Finance and Administration department, Program development, Monitoring and Evaluation unit, MAMMIE unit, Cluster unit and SMART Centre unit. These units comprise of multidisciplinary team of professionals including engineers, technicians, officers, coaches and support officers- which are converged by a motivated and a strong management team. Through the joint efforts and collaboration from all the units, SHIPO has been a successful achiever of its projects, planned objectives, outcomes and goals. SHIPO programme involve the intervention in water and sanitation and Child development and protection.

MAMMIE Unit

Mawengi, Mlangali and Milo are 3 Wards located in the District of Ludewa, in the South of Njombe Region in Tanzania. The Mawengi, Mlangali and Milo Integrated Education (MAMMIE) Project is aimed to improve the quality of education in 20 rural primary schools located in those wards and is the largest project currently being implemented by SHIPO.



MAMMIE project has been designed with an integrated approach encompassing both software and hardware interventions. The hardware interventions include the construction of different kinds of buildings (11 classrooms, 50 latrines, 10 dining halls and 5 kitchens) and the provision of equipment and materials to the schools (Books, furniture, tools, waterpoints etc). The software interventions focus on building the capacity of teachers and the school communities through training and awareness raising activities.

technical support as well as core financial resources. SHIPO is implementing this project in collaborating with the relevant district, ward and village authorities, and with the beneficiary communities in all field activities. But also during the its two years of implementation the project has obtained the support of other local and international partners such Winrock, Connect International, Raleigh International, The Private Forestry Program, Vikindu Teachers College, the Tanzanian Agency for the Development of Educational Management (ADEM) and Temeke Teachers Resource Centre Among Others.

MAMMIE project was started in October 2014 in partnership with WeWorldOnlus, an Italian organization which provides

The following paragraphs account or and describe the main activities accomplished by MAMMIE project during 2016-2017.

Capacity building Activities:

During 2016-2017 SHIPO implemented the following capacity building activities under MAMMIE project.

- **Training in School Management and Leadership for teachers and school committees for 20 primary schools.**

The objective of this training was to provide with tools, knowledge and motivation to the head of teachers and to selected members of the school committees do a better management of the school in important topics such the implementation of education policy and regulation, the cleaning and maintenance of school infrastructures and the mobilization of parents to make contributions to the school and to avoid teachers and pupils' absenteeism. The role and the responsibilities of school committees were deeply discussed.

- **Training for teachers in Pre-Primary Education facilitated by Vikindu Teacher's College.** In October 2016 SHIPO organized a 5 days training in SHIPO's premises. 60 teachers of all 20 beneficiary schools attended the training. The training was intended to provide teachers with tools and techniques and motivation to provide with quality education services to pupils at pre-primary level. The training focused on the learning by playing approach and in the use of Montessori teaching aids.
- **Training in English and Mathematics facilitated by Vikindu Teacher's**

College for 52 teachers

of 13 schools. The objective of the training was to identify the topics under Tanzanian primary education syllabus that teachers of beneficiary schools find more difficult to teach and to refresh teachers' knowledge and skills on identified subjects providing them with new tools and methodologies to teach those subjects at school.

- **Training in nutrition for teachers, pupils and parents in 20 schools.** Parents were invited to this training in order to discuss the importance of nutrition for school children. Nutritional advice was provided in order to improve the diet of pregnant women, babies and pupils both at home and at the school. Also, demonstrations were done on how to cook nutritious meals at the school as well as on hand washing and home water treatment.
- **Training on menstrual hygiene management:** Teachers, Pupils and Parents were invited to attend training in Lufumbu, Ligumbiro, Madunda and Luvungo primary schools where changing rooms for girls have been installed so girls can wash and change during their menstruation. The objective of this training was training female pupils on how to deal with hygiene menstruation both at school and at home. Also, to encourage teachers and family members to make sure they provide girls with all the required support for them to comfortably attend school during their menstruation.

- **Training on Active Learning Methodology and Blooms Taxonomy for 80 teachers of 20 schools facilitated by Vikindu Teachers' College.** The objective of the training was to equip the teachers with better tools to engage with the pupils in class making them the centre of the learning process through participatory approaches. Also, the trained gave teachers the opportunity to review techniques to better evaluate the knowledge and the capacities of the pupils.
- **Training on school gardening and tree planting:** SHIPO, in collaboration with the Private Forestry Program and the local extension officers has trained 1547 Pupils and 1053 parents on best agricultural practices creating 20 tree plantations and school vegetable gardens. The gardens and the plantations have been monitored by the Extension officers for more than 6 months and the different varieties of fresh vegetables harvested have been used for the school meals of the pupils in all 20 schools improving the nutritional value of daily school meals.
- **Training on Children rights, Gender and HIV/AIDS to staff and other stakeholders.** SHIPO in collaboration with We World International, conducted a 4-days training on Child rights, gender and HIV/AIDS to a total of 43 people including 20 SHIPO staff, 4 Ludewa District officials (Ag. DEO, DAO, Ag. DSWO, Ag. dDCDO), 4 Ward Education Coordinators, 4 Ward Executive Officers and 4 Community Development Officers from 4 wards (Milo, Lubonde, Mlangali and Mawengi), 4 Journalists (2 from Uplands FM, 1 from Kings FM and 1 from Starter FM – all of them are from Njombe region) and 2 other

staff from We World

Tanzania. The training was facilitated to prepare these stakeholders to be fully equipped with the skills and be ready to help communities to combat all challenges related to child rights, gender and HIV/AIDS.

- **Training on subjects for new curricula (STD 1,2) and pre-primary with focus on 3R subjects**

Due to the policy revision of 2014 concerning the educational sector, the structure of basic education has changed. Reforms of the school curriculum have been formulated: some of the subjects have been reorganized, while others have been introduced for the first time within the school teaching. The residential training on new curricula focused on the 3R approach, which stands for "reading, writing and arithmetic"; these skills were mentioned among the main items of the 2014 revision, oriented towards a program which highlights the basic skills development.

It was a 12 days training and hosted 86 people: 78 teachers, 3 SHIPO staff, 2 Ludewa District officials (SLO-p, DAO-p), and 3 Ward education coordinators (Mawengi, Lubonde and Mlangali wards)



Construction activities:

MAMMIE carries out all construction activities in the beneficiary schools in partnership with the local communities. The communities contribute with man power as well as with local materials such as sand, bricks and stones. SHIPO provides with the industrial materials like cement, iron bars, roofing sheet etc. Furthermore, SHIPO places permanently at least one mason in each construction and a technical officer weekly supervises all construction activities. During 2016 and 2017 SHIPO has carried out the following building activities under MAMMIE project:

- **Construction of 6 classrooms** in Mkiu, Masimbwe, Mapogoro, Mdetete, Kiteweale and Milo primary schools
- **Reconstruction of 2 classrooms and 1 teachers' office** in Iyunguya primary school,
- **Construction of a total of 32 latrines** in Luvungo, Ligumbiro, Lufumbu, Itundu and Mawengi primary Schools.
- **Construction of 8 dining halls and 6 kitchens** in Wecha, Mapogoro, Mavala, Ikalo, Kiyombo, Ligumbiro, Lupande, Mkiu and Luvungo primary schools.
- **Construction of 2 wells fitted locally produced pumps** in Mawengi and Madunda primary schools
- **Construction of a rainwater harvesting system** in Kiteweale Primary school.



ONE OF THE CLASSES BUILT BY SHIPO

Provision of equipment:

During 2016 and 2017 SHIPO has finalized the procurement and distribution of the following items in all MAMMIE beneficiary schools:

Item	Amount Provided	Item	Amount Provided
Textbooks for primary	4642	Aluminium cooking pots	28
Pre-primary book kits	14	Kitchen tool kits	7
Teaching aid kit primary	7	Footballs	80
Pre-primary teaching aid kits	7	Netballs	80
Pre-primary chairs	360	Football Goals	6
Pre-primary tables	120	Netball Post	18
Pre-primary cupboards	7	Sports Vests	440
(primary) - chairs	140	Tree Seedlings	16880
(primary) - desks	280	Packages of assorted Seeds	20
(primary) - tables	113	Gardening tool Kits	20
(primary) - cupboards	84	Carpets	60
Steel made cooking pots	20		

Cluster Unit

Cluster, is a special unit in SHIPO for accommodating and implementing all other SHIPO projects which requires technical facilitations. As other units do, Cluster unit shares its capacities with other units. Before implementing construction projects, we train people in various topics, the projects may be E.g. schools, dispensary, dormitory, teacher houses, and water structures. Sets up local construction committees with whom they arrange all building activities.

Work close with communities to make them aware of development activities and to ensure sustainability of the projects. Responsibility for sensitization and social progress monitoring as well as development of new programs. Facilitate needs assessment, collects community requests,

and assists community members to get an overview of their own situation, needs, priorities and capacity and facilities communities to produce plans that form the activities they will undertake to improve development of community and also provides technical project designs for implementation plans.

Cluster Unit started in 2016 after the review of SHIPO organizational structure and put all projects which previously were under Technical department. The unit is implementing its projects in collaboration with the relevant district, ward and village authorities, and with the beneficiary communities in all field activities. St.Endelea and Jan van Dijik, Karibu Tanzania and Wild Geese, Heijmerink-Reith, Water-Aid Tanzania, Green Resources Limited, Connecting International, Heifer International, Raleigh International, and community and Private



Forestry Programme are the main partners in Cluster unit.

Capacity building Activities:

During 2016-2017 SHIPO implemented the following Capacity Building Activities under Cluster Unit project.

- **Training for Good Governance in 1 Ward.** Madilu ward has five villages, Madilu, Manga, Mfalasi, Ilawa and Ilininda. The train was also done during implementation of water catchment and latrine Construction projects for local Masons and carpenters in Igamba, Lungwa, I tepula, Isansa, Hatelele, Shiwinga, Sambewe and Nansama villages. The objective of these training was to provide knowledge on the roles and the responsibilities of Village leaders, School committees, Construction committees, local Masons, and carpenters in implementation of community projects. Some topics covered were Roles and responsibilities of stakeholders, Participatory approaches, SWOT analysis, Work plan, Store keeping, and technical construction methodologies.
- **WASH training to teachers:** The main objective of this activity was to improve hygiene and sanitation behaviours to schools' teachers and Pupils so as to minimize the spread of hygienic and sanitary related diseases in 6 villages of MFLI project namely; Igamba, Lungwa, Mpito, Itepula, Nansama and Sambewe.

Construction activities: The Unit carried out all construction activities in the beneficiary schools' latrine, dormitory, improvement for water catchment's, boreholes and open wells/hand dug wells in partnership with the local communities and Company. The

communities were responsible to contribute manpower as well as all local materials such as sand, bricks and stones. SHIPO provided all the industrial materials like cement, iron bars, roofing sheet etc. Furthermore, SHIPO places at least one mason in each construction and a technical officer in a weekly basis, supervises all construction activities.

Completed and On progress projects 2016-2017:

During 2016-2017 SHIPO has successfully carried out the following projects under Cluster Unit where most of them have been completed:

Latrines construction

- Isansa primary school two blocks with 20 double vault and 2 special hygienic unit room **completed** and handed over.
- Iwalanje primary school two blocks with 20 double vault and 2 special hygienic unit room **1 block completed** and handed over and **1 block is on progress.**
- Hatelele two blocks with 20 double vault and 2 special hygienic unit room **completed** and handed over.
- Shiwinga primary school two blocks with 20 double vault and 2 special hygienic unit room **completed** and handed over.
- Mpito primary school two blocks with 20 double vault and 2 special hygienic unit room is **on progress.**
- Nundu primary school one block with 12 drop hole Latrine and 1 special hygienic unit, **completed** handed over
Therefore 8 blocks have been completed and 3 are on progress



Drilling Bore hole and open/Hand dug well

- Igamba Village (dispensary) one bore hole with rope pump is **completed**.
- Lungwa Village(kati) one open hand dug wellwith rope pumpis **completed**.
- Isansa Village(Ilangali) one open hand dug well is **on progress**.
- Mpito Village(A) one open hand dug well with rope pumpis **completed**.
- Nansama Village (Kati A) one open hand dug well is **on progress**.
- Sambewe Village (Kati)one open hand dug wellwith rope pump is **completed**.
- Iwalanje Village(kati&kamficheni) two open hand dug well is **on progress**.
- Shiwinga Village (secondary school) one bore hole with rope pumpis **completed**.
- Hatelele Village (dispensary)one bore hole with rope pump is **completed**.
- Malombwe Village (primary school) one bore hole with rope pump is **completed**.

Therefore 7 water points were constructed and 3 are still on progress

Water Catchment's Improvement

- Itepula Village (Mwenzu) Water catchment Improvement is **completed**.
- Igamba Village (Isenti) Water catchment Improvement is **completed**.
- Lungwa Village (Malanje)Water catchment Improvementis **on progress**.
- Isansa Village (Luonga) Water catchment Improvement is **completed**.



- Mpito Village (Mbwaji) Water catchment Improvement is **completed**.
- Sambewe Village (Bwawani) Water catchment Improvement is **on progress**.
- Shiwinga Village (Mazimbu) Water catchment Improvementis **on progress**.
- Hatelele Village (kati)Water catchment Improvementis **on progress**.

Therefore 4 water catchments have been improved while other 4 are still on progress



Rain Water Harvesting Tanks

- Malombwe Village (Primary school) 3 Rain water harvesting tanks are **on progress**.

Kitchen with cooking stove

- Malombwe Village (Primary school) Construction of 1 Kitchen with cooking double stove to hold two potshas been **completed**.

Dormitory

- Madilu Village Secondary School Construction of 48 beds' boy dormitory is **on progress**



Other projects realized under this unit

- A total of 26,640 Pine trees have been Planted in 60 hectares at SHIPO farm of about 100hectares in Mgala village.
- 1 group of 20 people was trained on beekeeping and supplied with 100 beehives at Mgala village under Mgala bee keeping project
- About 900 avocado seedlings were planted and Psychosocial support was provided for the foster parents and to the OVCs respectively

SMART Centre Unit

The SMART Centre is one of the units at SHIPO. It is a training Centre for local entrepreneurs in the WASH sector. The role of SMART Centre is to scale up the access to water and sanitation by means of building supply chains of innovative, cost-effective and market-based technologies and products. "SMART" stands for Simple, Market-based, Affordable and Repairable Technologies.

Activities implemented

The below is the overview of activities that have been organized by or participated in by the SMART Centre.

1. ZH2O Entrepreneurs training

The training is normally in April to May of the years. (4 weeks) focuses on training the local entrepreneurs in rope pump construction. In 2017, the training also included other (new) topics such as data collection using Visible impact (Digital data collection system), after the training the App was installed to the few trainees who had the smartphones and during data collection process, most of them were able to use the tool to collect and uploading information to SMART Centre. Business training was also part of it, as well as the implementation of a quality monitoring program. In November 2017, a meeting took place to provide certificates to the trained artisans and gives motivation to the workshops that cooperated well with SMART Centre in providing proper information by their willingness.



2. Songea publicity campaign

In 2016, the SMART Centre activities expanded to Songea, Iringa and Mbeya in selection of participants for the ZH2O training of entrepreneurs. As a result, the SMART Centre received two participants from Songea; 1 welder and 1 driller. The objective of this publicity campaign was to promote SMARTechs in a new geographical area (Songea) because:



- The SMART Centre has trained entrepreneurs in Songea but they were not helped exposed to the market. Before this activity, SHIPO had not done any SMARTechs promotion in the area and therefore, there was no an entrance door to the market for the trained entrepreneurs. By promoting SMARTechs, and introduced them to various stakeholders, SHIPO expects the increase in the entrepreneurs' sales.
- In Njombe many people are aware of SHIPO SMARTechs and are continuing to use them, therefore scale up of technology was necessary
- In Njombe there are many trained artisans already, who are working to help community in accessing the water resources

As a result, in March 2017, SMART Centre in collaboration with the trained artisans, drilled 1 well in one primary school at Peramiho Songea. The event was fully participated by District Water engineer. A Well was successfully completed, pump test was done and water quality was also done in collaboration with the District Water Engineer. This well yielded water of about 1052 litres/hour

Also, the school was provided with 8 table top water filters from which one was for staffs and 7 were for pupils one per class, the school and the authority were all happy about the service. Follow up is always done and according to the school head teacher, everything is going well. During monitoring visit in Songea it is observed the five clients that received services for dug wells from the

trained artisans were all motivated through the well in the school

3. South Sudan Manual drilling training

In May, a training has been conducted in South Sudan by Mr. Laban Kaduma (SHIPO trainer) on manual drilling.

4. Advocacy to Public (Nanenane Farmers Day in Mbeya)

SHIPO in collaboration with partners Uvinjo and Kisangani Smith group with the cooperation of Njombe Towns Agricultural department took part in the yearly farmer's exhibition in Mbeya Town. The object was to showcase SHIPO as a center of excellence in Affordable technologies building capacity of entrepreneurs in affordable technologies in Wash and Energy.

SHIPO partners showcased and sold, drip irrigation kit in real time, rope pump driven solar gear motor, water filters, water wells, bio mass cookers, gardening tools, the event were very successfully done. Visitors and customer's response, challenges SHIPO and partners to conduct a farmer exhibition locally in Njombe before the end of the year, because most of to be customers cannot afford to visit the farmer's exhibition Mbeya and therefore don't get the opportunity to experience on innovations in agriculture so SHIPO held an exhibition in 13th December 2017 in SHIPO grounds.

4.1 Nanenane Event 2017

SHIPO participated in the Nanenane in Mbeya. Through the event SHIPO together with its partners managed to reach ...people where different SMART technologies were requested including drip irrigation kits, filters, rope pumps, wells energy stoves and gear motors for solar water pumping

managed to reach many people outside the Exhibition ground

5. Mto wa Mbu Arusha Farmers' Day

During the training in April 2017, it was recommended that one SHIPO partner should be trained by ZH2O funding,

The partner could develop an exhibition



ONE OF THE RESULTS OF SHIPO'S INTERVENTION IN WATER ACCESSIBILITY AND HOW IT CONTRIBUTES TO IRRIGATION FARMING



Was to reach 3000 people but we managed to reach more than the target, from which 1000 were very serious and interested with SMARTechs (at Nanenane ground)

SHIPO managed to conduct interview session with Kings FM radio which covers Njombe region with the population of about 750,000 people, also the radio is heard in other regions like Iringa, Mbeya, Ruvuma and Dodoma. So, through King's radio we

garden in the Northern part of Tanzania as a mean to showcase affordable technologies in other areas in Tanzania. Therefore, SHIPO using a trained artisan participated on the farmers day event at Arusha. A lot of people who came to visit at the garden were impressed and ready to request SMARTechs.

By partnering with MVIWATA, MVIWABU and Mkombozi Group, SHIPO has been able to showcase the possibility of using water

efficiently in this area were water supply for gardening is increasingly becoming scarce.

During this Farmers demonstration, more than 100 people attended after invitation.

During the demonstration, the solar driven rope pump was also exhibited among other technologies like Biogas system, fish farming and bee keeping as a package of affordable technologies for environmental sustainability.

SHIPO Farmers day

In 2017 SHIPO organized a farmers' day with the aim:

1. To give chance to the Farmers and other stakeholders involved in Agriculture sector in

Njombe Region to get the opportunity to experience the innovations in agriculture using SHIPO SMARTechs.

2. To invite the Regional Commissioner and keypersons to learn and increase their understanding on SHIPO SMART Technologies and obtaining wider support from government and other stakeholders to cooperate with SHIPO so as to make sure the SMARTechs are recognized and properly used. A lot of appreciations were provided by the attendees of the event. More than 80 people participated during the event and different technologies were publicized such as hand pumps, bicycle pumps, solar pumps, windmill pumps, drip irrigation systems, water filters, etc.



Program Development, Monitoring and Evaluation Unit

It is a cross cutting Unit in SHIPO which is responsible for development, day to day monitoring and periodic evaluations of the projects and maintaining the public relations. It is responsible for maintenance of data, analysis, reports reviewing and sharing the lessons learnt throughout the implementation of the projects at SHIPO.

SHIPO has successfully completed over 30 projects and sub-projects and handed them over to the community. These projects were implemented in schools and to the communities. All the projects especially constructions, have been completed in

For the past 2 years, 2016 – 2017, SHIPO had done wonderful things to be proud of and the lessons studied are shared below

Lessons learnt

a. Community participation

collaboration with the community and the LGAs. SHIPO learnt that, all projects which involved community participation from the beginning, have proven unity, togetherness, have contributed to frequent community meetings and therefore getting chances to talk their development issues, but also reach to the consensus on how community development projects will be implemented, supervised and facilitated in their villages including provision of man power and resources to accomplish different projects.

Through these meetings, SHIPO was able to deliver community awareness and sensitizations to the projects, conducting

good governance to relevant authorities selected among the people by the community themselves such as construction committee members, store keepers, masons etc., the step which allowed them to sign the project contract, ready for implementations. In all the construction activities SHIPO has done to the community, the community members were responsible to prepare all local materials such as stones, aggregates, bricks and sand. Joint monitoring between community, construction committees, leaders and SHIPO in mid and final steps of projects, was done during Midterm and Final evaluations. It is the period where errors/ mistakes that occurred during implementation, were corrected or solved and satisfaction to the project was reached. For all the places where the implementation of projects involved the community, their sustainability has been observed. Infrastructures were well protected and maintained. It is evident to see a 5-year building looks like it has been constructed today. Communities remain with fully authority to control the operation and maintenance of the project, and by this approach, SHIPO is strongly recommending the participation of local communities in each stage of every development projects.

b. Staff commitments

One of the most important things for any project to be successful is to have committed, innovative, strong, creative, hardworking and a motivated team of staff. Recruitment of these professionals to join SHIPO team has been a root for all impressive successes. Team work spirit, and staff joint monitoring of projects' progress are among the many gold crowns SHIPO has for the

implementation of development projects in the communities. Put a right person in a right time at a right place

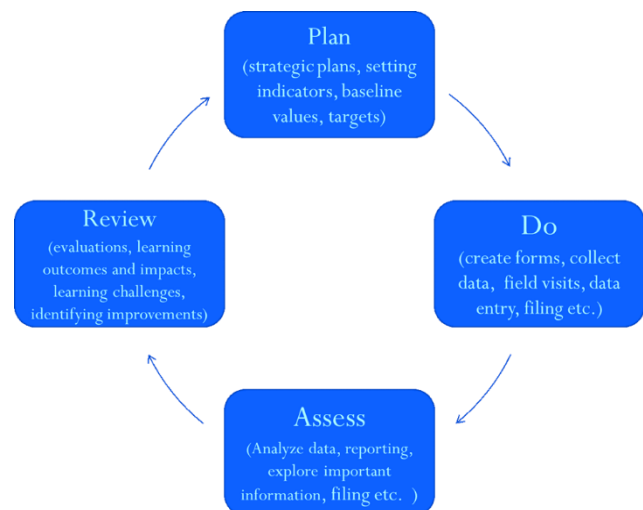
c. The power of M&E data collection systems in place

Since 2017, SHIPO has been using the Visible Impact tool as its M&E data collection system. This digital system has proven its effectiveness in organizing information and centralizing all data at one point. The system allows SHIPO to have a quick knowledge of what is going on from every project in different sites before actual or physical visits. Data are collected through the Tablets and then uploaded for storage and further analysis. In this way timely collection of information, real data, proper analysis, and accuracy of information has been assured. The use of this system has equipped staff with necessary skills on the importance of Information Communication Technologies in implementation of projects. SHIPO uses the system to collect information of all constructions projects, baselines, different surveys, evaluations in projects, water points and records. SHIPO recommends the use of appropriate technologies available to simplify implementation of projects so as to increase information accuracy, preciseness to lead proper results and outcomes.

d. Weekly staff recap and planning meetings

SHIPO has managed to include in its activity routine, the weekly recap and planning meetings. The weekly meeting with staff is a central panel for decision on planning, implementation, assessment and review of every new or ongoing projects.

SHIPO team have managed to complete projects according to annual operation plans and as part of strategic plans, project outcomes, outputs and indicators where agreed on and with help of Visible Impact, data are now being collected and analysed. Also, field visits from both M&E unit and SHIPO management team have led to the smooth implementation of projects. Analysis of information and reporting has assured flexibility in methodologies of doing things and management of time, and through this SHIPO learned the outcomes and impacts but also challenges and their solutions which have been arising from the sites. The corrective measures and changes of methodologies, have been discussed in these weekly meetings together and therefore raised engagement and encouraged the team members on their job.



SHIPO's M&E Cycle



e. Readiness and commitments from the Local Government Authorities

Very many thanks and appreciations go to local government authorities, for they have been so cooperative and committed in making sure that, projects were successful completed. The LGAs are the key organs to make any kind of project run and be fruitful. From all levels – the District level to the village level – SHIPO has been confirming the community mobilizations, cooperation and commitments put forward as a result of these leaders. Invitation is called upon to all organizations to make use of LGAs in each and every step of their community development projects.

f. Challenges

SHIPO has also experienced challenges which positively enabled the success of implementation of later projects. The main challenge found at the end of strategic plan 2012-2016 is; difficulties in implementation of projects especially for construction projects during certain times of the year. Heavy rainfall and poor roads in some of the project sites led to some delays in the implementation of projects. Transportation breakdown is the most constant delaying factor observed to all software and hardware projects. Most of constructions are recommended to be done when rain season is over.

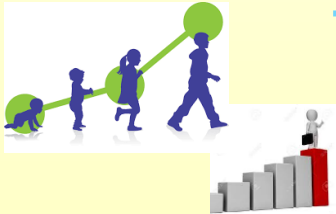
Early involvement and engagement of communities, lead to better results. Community need time to prepare itself before the actual implementation of projects take off, this will help them to match participation to the project and their normal responsibilities (eg. Agriculture activities).

Community members have family and personal commitments which need to be taken care of before making decisions to project commitments.



Our Impacts

Child Development and Protection

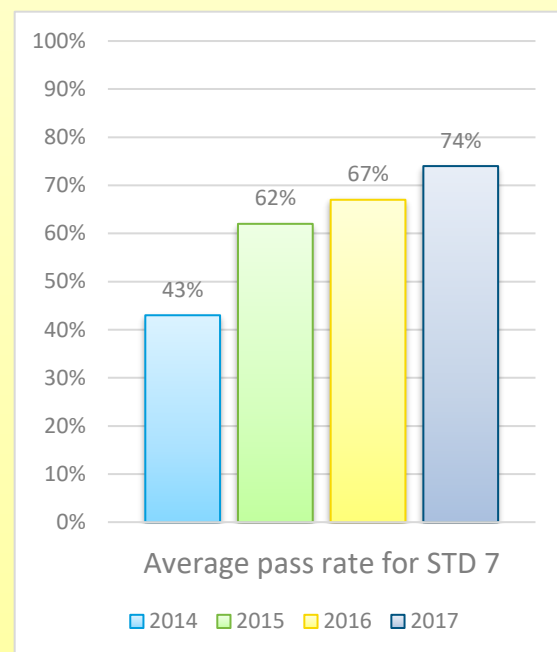


The trend of the students' performances of the national examination of standard 7 in 20 project schools increased by 72% respectively in 2017 results compared to 2014 results

Thanks to the relevant training to the teachers and the exceptional collaboration of the community, the teachers and the local authorities the main objective of improving the education services in our 20 schools have been achieved. The project has been extremely effective in improving the academic performance of the pupils according to the results achieved in the National Examinations both in 4th and 7th Grade.

In the case of grade 7 pupils, the pass rates of the national exams have increased constantly from 2014 (Baseline). This means, the more children in our beneficiary schools are now capable to promote to secondary education. In the case of 4th grade pupils the increase in performance is also very good. The average Pass rate has increased from 60% in 2014 to 92% in

2016 (Results for 2017 are expected to be out in 2018).



Also, the % of pupils that obtain high scores (an A or a B) has increased significantly between 2014 and 2016. All in all, the academic results of our beneficiary children have been enhanced indicating the effectiveness of the project. It seems demonstrated that now schools and teachers are providing better education services to the beneficiary children.



85.85% of all trained teachers passed the final exams (Training post-tests) for the subjects studied during the training. These In Service trainings (INSET) are Mathematics, Science, English, Kiswahili, Active learning methodology and bloom's taxonomy, school management and governance and pre and primary.



95% schools with access to clean improved water source inside the school compound. SHIPO ensured access to water in all the 20 project schools where

some schools were installed with Rope Pumps which is the affordable technology for accessing water.



43 different stakeholders trained in Children rights, Gender and HIV/ AIDS including staff, District and Ward education, and Child welfare officials. This training aimed at increasing the skills and prepare all relevant stakeholders to fight for the child rights and gender and eradicate stigmatization in the community against people living with HIV/AIDS

6 CLEAN WATER AND SANITATION



Water and Sanitation



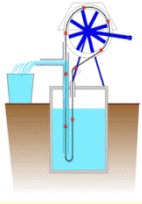
More than 3000 water points have been installed (Including the Households, Community, Schools, institutions water points) which led to over than 15,000 people to have access to water through the affordable rope pump technologies since 2001, where over 85% were able to access water in 2016/2017 through the work of entrepreneurs who were trained by SHIPO under the "Training of Entrepreneurs" project funded by ZH2O through the help of SKAT foundation.



10 villages have been benefited from improved water sources through the Mbozi farmers' livelihood funded by Heifer international



Over 60 local entrepreneurs trained on Pump producing, Manual Drilling, HWTS, Irrigation methods, Adaptation to climate change, Ground water recharging, Rain water harvesting, Business Training, Solar pump & Digital Data collection with Visible Impact in 2016/ 2017 funded by ZH2O through the hep of ZH2O



15 schools have been installed with rope pumps and now have access to improved water through SMART technologies through MAMMIE project supported by We World International and Heifer International



Formation of 10 Community Owned Water and Sanitation Organizations (COWSOs) from 10 villages of Mbozi District and continuing to capacitate their leaders through Mbozi Farmers Livelihood

Project funded by Heifer International. The entities are responsible for the management of water resources and infrastructures in their respective villages and they are recognized by the Laws of United Republic of Tanzania



Over 5 Foreign trainings were facilitated on SMART technologies (Provision of Training for Affordable technologies to other countries such as Malawi, Zambia, South Sudan, Mozambique etc)

Over 20,000 Children and their families, teachers, LGAs, Entrepreneurs and community members have been reached in respect of Education and Health, and through Water, Sanitation and Hygiene in 2016/2017





Get Involved

✓ Regular giving

However big or small, your contribution has the power to change the lives of children and their communities in Tanzania. Becoming a Friend of SHIPO, you can choose to give any project support regularly. Choosing to give regularly means that SHIPO can plan for the future, and without worry can always continue to develop the communities we support.

✓ Become an ambassador

Our Ambassadors go that extra mile to support SHIPO. Promoting our work as widely as possible and encouraging more people to support SHIPO, they are committed to the work that we do and are a key part of the team

✓ Common interest

SHIPO welcomes everyone with common interest into the water and sanitation, education and health sectors to unite our efforts in supporting the communities - to have access and improved water, sanitation, education and health.



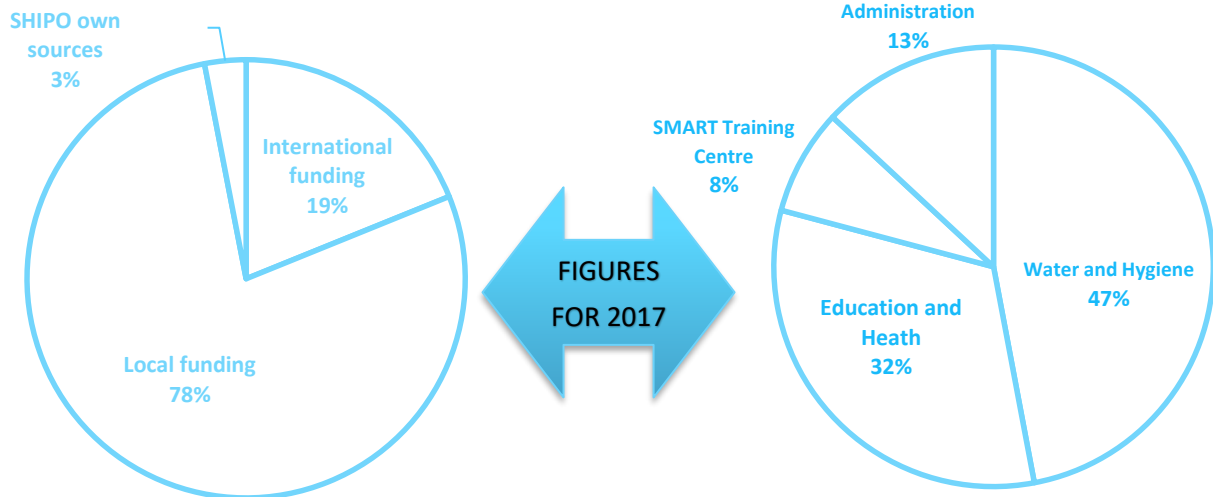
Financial Performance

Income

SHIPO is getting its income from various Sources. The sources are categorized as international funding – the grants obtained from international funders/ donors, local funding – funds that are secured from within the country and SHIPO own sources – funds that are generated from projects with organization costs within it.

Expenditure

SHIPO spent the income obtained for its programmes. Mostly in 2016-2017, expenditures were done in Education and health category followed by water and sanitation.



FINANCIAL PERFORMANCE		2016	2017
Income			
Sources of Income (EURO)			
a	International funding	94,874	91,527
b	National funding	427,456	378,649
c	SHIPO own sources	42,721	14,778
Total Annual Income		565,052	484,954
Expenditure (EURO)			
a	Water and Hygiene	123,791	289,619
b	Education and Health	365,244	197,769
d	SMART Training Centre	13,639	47,898
e	Administration	39,174	80,545
Total Annual spending		541,848	615,831



The Year Ahead

Child Development and Protection

Despite of the success and the progress there are still many things to improve. In September 2017, a new project phase (MAMMIE 2) to be implemented between 2017-2020, was secured by SHIPO. From October 2017, further training with teachers and preparations for new activities have been implemented. In 2018 there are plans for building new infrastructures (school latrines and dining halls) the as well as for implementing new capacity building and sensitization activities in topics like organic avocado farming for school income generation. As a novelty SHIPO will work on personalized coaching for teachers and school committees and will empower local education authorities to implement a carry out a closer supervision of the school through a joint supervision plan.

SHIPO is currently looking for new sponsors to support MAMMIE activities programmed in the next year. If you think or your organization may be interested in becoming a partner in MAMMIE project do not hesitate in contacting with us.

Continue to improve infrastructures by building the second Boys dormitory at Madilu which will accommodate 48 students at once contented with every facility such as electricity, chairs and tables, latrines etc.

SHIPO will continue to provide technical supports to OVC projects in Mgala and Ngalanga to make sure that, the targeted children receive their rights to study and get prepared for future lives.

Water, Hygiene and Sanitation

SHIPO expects to continue providing Training on SMARTechs to new Entrepreneurs and update those who were once received the training. About 25 Entrepreneurs are expected to receive training on Pump producing, Manual Drilling, HWTS, Irrigation methods, Adaptation to climate change, Ground water recharging, Rain water harvesting, Business Training, Solar pump and Digital Data collection through the Visible Impact system.

SHIPO will continue to make advocacy on the best and affordable water technologies for easy accessibility of water at household, District, national and international levels. It is evident and we believe that, our technology is the solution to water access to many people especially those who are in rural areas where there are no worked systems for water access. Our technology has proven to be Simple, Marketable, Affordable and Repairable Technologies. All materials for pumps and well digging are available in the

local areas and their maintenances are simple and available.

SHIPO with the help from Karibu Tanzania will continue to improve the access to water by building a large rain water harvesting tank in Igomba school in Wanging'ombe district. The tank is expected to collect more than 65,000 litres of water which will be used for both the school and the community around the school.

Expanding relations with other group of people like farmers and other institutions to integrate our technologies with agriculture and helps on mitigations against environment change. We believe a lot can be done using our technologies to increase the value of crops through our connected technologies.

We encourage farmers to use drip irrigation methods to increase land productivity and

profit at a small land at a cheap price. Different technologies for water accessibility and use are available at SHIPO such as hand pumps, bicycle pumps, solar pumps and windmill pumps. SHIPO also has been and will continue to make drip irrigation kits available for farmers and will continue to conduct awareness and sensitization activities to the community and all levels to understand our technologies and their effectiveness in increasing the income using different events such as Entrepreneurs training, SHIPO farmers day, National farmers day (Nanenane), Water weeks, International forums, Publicity campaigns, Southern Highlands zone WASH Forums, and through the Tanzania Water and Sanitation Network (TAWASANET).

Thank You
For Showing Some Love

Our Donors, Stakeholders and Supporters

We would like to use this opportunity to pass on our heartfelt thanks to all our Donors, Partners, Friends of SHIPO, Ambassadors, and Sponsors, Supporters of our programmes and our many other loyal individual supporters over the years. Wish you happy new Year 2018 and still welcoming you to support SHIPO!





What your Money can Support/ Buy

€ 12,432

Completes a block for girls' latrine with a special room for girls' hygiene to increase girls attendance to school (Donor + Community contributions)

€ 30,000

Completes a dormitory which accommodates 48 pupils especially girls to safeguard their lives from people with bad intentions

€ 13,913

Trains 25 Small and Medium Enterprises on affordable technologies for Water, Sanitation and Hygiene (WASH) to provide WASH and MUS services in the communities

€ 15,000

Trains 60 Teachers on either Active Learning Methodologies and Bloom's Taxonomy, School management of governance, or any of two related subjects between Mathematics, Science, English and Kiswahili who work in rural areas

€ 23,391

Completes a dining hall with a kitchen facility



CONTACTS

Southern Highlands Participatory Organisation

P.O BOX 227,
NJOMBE,
TANZANIA, EAST AFRICA.

Tel: +255 262 784 014

Website: www.shipo-tz.org

Email: info@shipo-tz.org

Bank Account Details

TZS ACCOUNT: 0150349777700
CRDB Tanzania, Njombe Branch

SWIFT CODE: CORUTZTZ

EURO ACCOUNT: 1950349777700